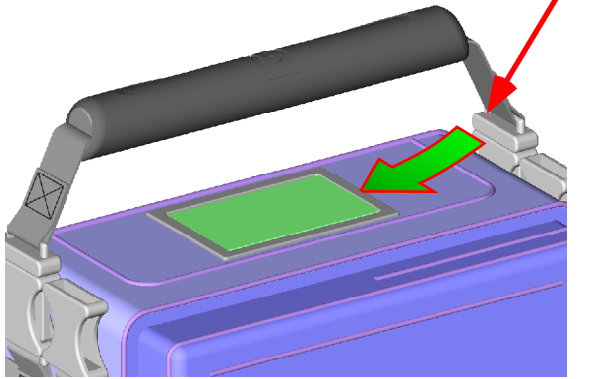


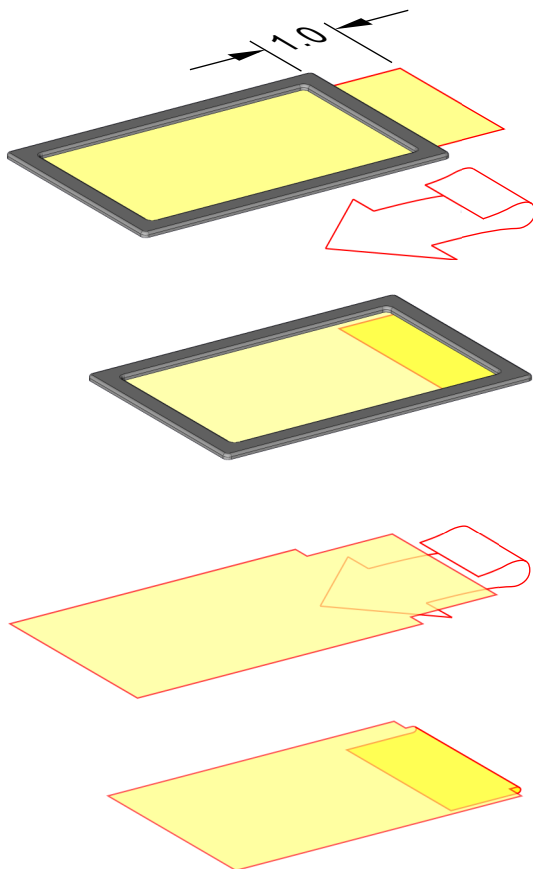
# Instructions

for the  
**FRONT BAG**

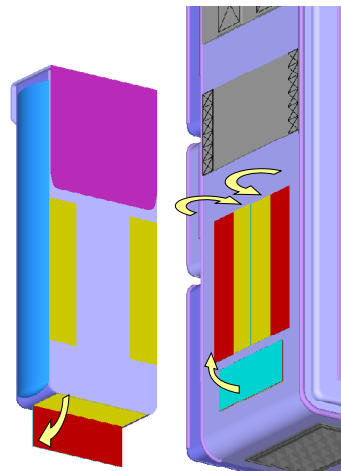
Slide your business card into the Business Card Holder.



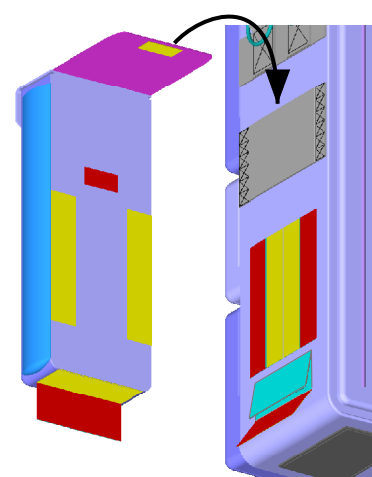
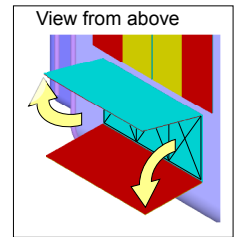
To secure the card, the clear plastic window has a one-inch extension. Once the card is inserted inside the sleeve, the clear extension is tucked back underneath the card. This secures the card in the sleeve and keeps the card from falling out. This tucked flap also serves to help protect the card from moisture (rain, etc.)



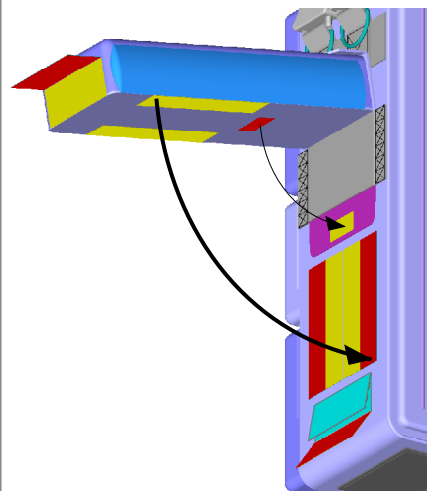
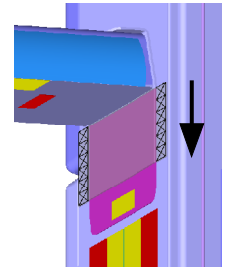
## Attaching the Accessory Pockets



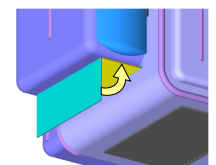
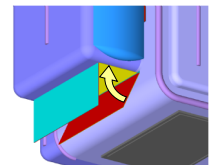
Open up the Velcro strips



Insert the stiff tab



Pivot the pocket down



Seal the two layers of Velcro on the bottom

## Removable Front Pocket Cover

This pocket cover can be removed for the purposes of getting it embroidered.

### To remove the Top pocket front cover:

- 1) Separate the Velcro on each of the two side-wall flaps.
- 2) Separate the Velcro on the inner and outer surface of the bottom wall of the pocket.
- 3) Completely unzip and separate the two halves of the zipper on each end of the zipper at the bottom of the pocket.

### To install the Top pocket front cover:

- 1) Start the two halves of the zipper on each end of the zipper at the bottom of the pocket. Zip up the zipper a small amount on each side.
- 2) Join the Velcro on the outer surface of the bottom wall of the pocket first.
- 3) Trap the zipper root on each side and join the Velcro on the inner surface of the bottom wall of the pocket.
- 4) Join the Velcro on each of the two side-wall flaps.

